

Carpet Edition

Pan

in-out door

Dati Tecnici

| | |
|-----------------------|--------------------------|
| Tecnica di produzione | Vinilico |
| Materiale Vello | 75% PVC - 25% Poliestere |
| H. Vello | 0,3 cm |
| Peso | 2,8 kg/mq |
| H. Rotolo | 2 m |
| L. Rotolo | 20 m |
| Bordo | E2 - con fettuccia in PE |
| Sottofondo | PVC |

Technical Data

| | |
|-------------------|-------------------------|
| Production method | Vinyl |
| Pile Material | 75% PVC - 25% Polyester |
| Pile Height | 0,3 cm |
| Weight | 2,8 kg/sqm |
| W. Roll | 2 m |
| L. Roll | 20 m |
| Edge | E2 - PE ribbon |
| Backing | PVC |

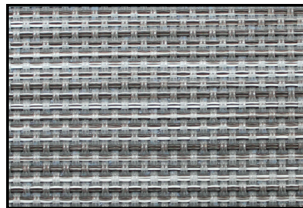
Misure / Sizes cm

100x200 - 150x200 - 170x230
200x250 - 200x300
ø 200

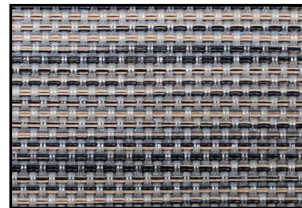
Disponibile su misura
Custom sizes available



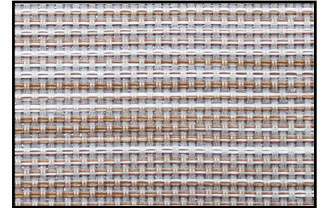
PN 01 Nero/Marrone



PN 03 Grigio Chiaro/Scuro



PN 04 Grigio/Beige



PN 06 Bianco/Beige